



VA West Roxbury is part of the VA Boston Healthcare System, located just 5 miles from downtown Boston

Site Overview

West Roxbury VA serves as THE tertiary inpatient medical center for veterans across New England.

- 158 inpatient beds including general medical wards, 3 intensive care units, and a spinal cord injury center
- On-site pharmacy and laboratory
- 24-hour emergency room
- MRI, CT, and echocardiography suites
- **Outpatient** services include: optometry, primary care, allergy, cardiology, dermatology, endocrinology, GI, hematology/oncology, infectious disease, mental health, neurology, neurosurgery, pulmonary, renal, rheumatology & more

Who We Are

Attending Staff

Rachel Druckenbrod, OD, FAAO

Lisa Fanciullo, OD

Jennifer Gustafson, OD, FAAO

Doug Rett, OD, FAAO

Clinic Hours

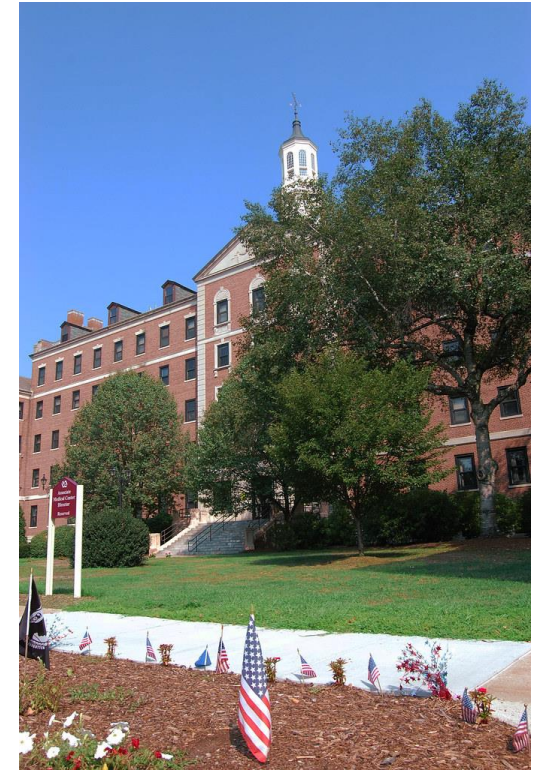
Monday through Friday, 8:00 AM to 5:00 PM

Contact Us:

Phone: 857-203-5440

Fax: 857-203-5706

Email: rachel.druckenbrod@va.gov



WEST ROXBURY VA MEDICAL CENTER

*VA Boston Residency in
Ocular Disease, AY 2020-2021*



**WEST ROXBURY VA
MEDICAL CENTER**
1400 VFW Parkway
West Roxbury, MA
02132



OD Residency Program at West Roxbury

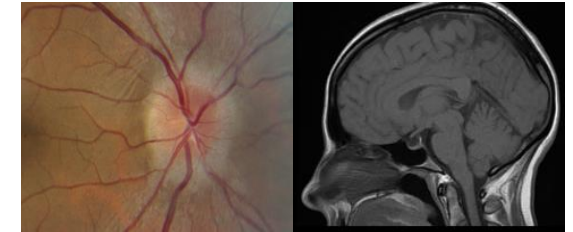
The West Roxbury program is dedicated to resident education and highest-quality, comprehensive optometric patient care.

- West Roxbury offers a challenging environment where residents learn to provide advanced optometric medical care with a “whole body” approach
- Residents work closely with highly-trained and dedicated attending staff

Acute and Inpatient care examples:

Traumatic eye/orbital injuries
Acute red eyes
Herpes zoster ophthalmicus
Acute binocular diplopia (CN palsy, MG)
Facial nerve palsy
Neurological visual field loss
Transient monocular vision loss
Optic neuropathy including papilledema
Visual hallucinations
Giant cell arteritis
Ocular involvement in bacteremia/fungemia

- Emphasis is placed on eye care in a hospital setting
- Residents communicate with physicians of consulting specialties and with nursing staff, acquire general medical knowledge beyond eye care, and gain perspective on



optometry’s role in the healthcare field as a whole

- Residents attain expertise in diagnostic and therapeutic decision-making and in advanced technical skills including gonioscopy, indirect ophthalmoscopy, scleral depression, visual field interpretation, and ocular imaging acquisition & interpretation (e.g. optical coherence tomography)
- Residents gain experience prescribing medications & ordering/interpreting both diagnostic imaging (CT & MRI) and laboratory tests

Facilities & Equipment at WX

- 4 fully-equipped examination rooms
- Full-service optical with on-site optician
- Humphrey visual field analyzer (HFA3 860)
- Spectralis OCT-II with OCT-A
- Fundus and anterior segment cameras
- B-scan ocular ultrasound

Patient Population

As of 2016, there are over 300,000 veterans living in MA alone.

- Most of our current veteran population served in the Vietnam war. About 6% served in WWII. A majority are males aged 55 and older and identify their race as non-Hispanic Caucasian.
- The eye clinic manages a large amount of ocular disease such as cataracts, glaucoma, ARMD, vascular eye disease, neurological eye disease, and ophthalmic manifestations of systemic disease
- A majority of the care we provide is outpatient eye care (comprehensive and problem-specific eye exams)
- Because the 24-hour ER and inpatient facilities are located at West Roxbury, we also care for acute/emergency and inpatient populations (<10% of our patient population)